

# COMPUMOD

M A K I N G I T R E A L

Compumod Pty Ltd as  
Trustee for Compumod Trust  
ABN 17 551 729 150  
Suite 201  
793-795 Pacific Hwy  
Gordon NSW 2072  
Tel 1300 965 690  
Fax 02 9844 5445  
[www.compumod.com.au](http://www.compumod.com.au)

10 June 2011

## Press Release: **Compumod appointed Australian Reseller for ZW3D CAD/CAM Software**

ZW3D All in one, affordable CAD/CAM EASIER, SMARTER, FASTER.

Compumod is pleased to announce that it has recently been appointed Australian Reseller for ZW3D CAD/CAM software.

ZW3D is a complete 3D CAD/CAM suite that provides ease-of-use, performance, and super-fast modeling functionality. ZW3D has advanced modules for 3D part and assembly modeling, 2D production drawing, Mold & Die design, Reverse Engineering, Sheet Metal, motion simulation, and optimized 2 through 5-axis high-speed machining.

ZW3D enables designers to work seamlessly with solids, surfaces, and manufacturing data in a completely integrated environment. Since the ZW3D Overdrive™ kernel is truly hybrid, healing or repairing models is not necessary, so designers can speed production by effortlessly mixing solids and surfaces. With ZW3D freeform Class-A surface modeling you can almost feel the smooth surface.

Reverse Engineering and Mold & Die Design are built into ZW3D so designers can generate and modify complex 3D models and molds on-the-fly from existing physical parts.

With this much power, there's no need to purchase expensive 3rd party add-ons. What's more, ZW3D radically simplifies Rapid Prototyping with its powerful manipulation, optimization and validation of surfaces, solids, STL, and scan data. Fully-integrated CAM means all models, even STL and Point Clouds are fully associative with manufacturing, which is just one-click away.

### **Assembly**

Lightweight ZW3D Burst™ technology enables very large assemblies to be manipulated at high speed without computer memory constraints. These can then be stored in the most appropriate way for each project. The tree structure for an assembly allows individual components to be graphically highlighted for easy modification.

### **Data Exchange**

Read and work with CATIA, NX , Pro/E, Inventor, SolidWorks, Parasolid, STE, IGES, STL, DWG, etc. to promote collaboration throughout the supply chain.

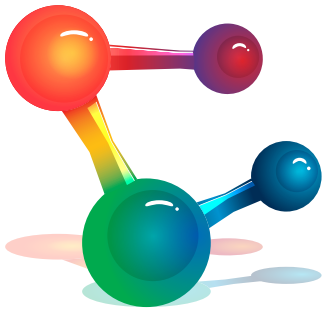
There are 3 versions of ZW3D:

*Standard* includes core 3D features, including Wire Frame, Solids, Free Form Class-A Surfaces, Sheet Metal and Translators.

*Professional* includes all of the features of the Standard version, plus Mold and Cavity, Reverse Engineering and Integrated PartSolutions Library.

*Premium* includes all of the features of the Standard and Professional versions, plus 2 and 3 axis machining, Post Processors and CNC Output Manager.

"We are extremely excited about our agreement with ZWSOFT as it means Compumod is now able to service a much wider range of clients with our premium software offerings," said Warwick Marx – Managing Director of Compumod. "As ZW3D is fully featured out of the box and affordably priced we believe ZW3D will take the market by storm and are excited to be chosen as a pivotal part of their growth plans."



# COMPUMOD

M A K I N G I T R E A L

Compumod Pty Ltd as  
Trustee for Compumod Trust  
ABN 17 551 729 150  
Suite 201  
793-795 Pacific Hwy  
Gordon NSW 2072  
Tel 1300 965 690  
Fax 02 9844 5445  
[www.compumod.com.au](http://www.compumod.com.au)

ZW3D is released by ZWSOFT. ZWSOFT (ZWCAD Software Co., Ltd.) is a world renowned CAD/CAM solutions provider, with over 180,000 clients across 80+ countries. Founded in 1998, ZWSOFT has created an international network of highly skilled partners, distributors, and resellers. Headquartered in Guangzhou, China, ZWSOFT and its operating subsidiaries currently employ more than 400 staff worldwide with branch offices in Beijing, Shanghai, Wuhan, and Florida, USA.

To find out more about [ZW3D](#), please visit the [Compumod website](#), official partner to ZWSOFT.  
Download a fully functional 30 day trial for free [here](#).

## About Compumod

First established in 1982, Compumod quickly became the name to trust for the supply and support of advanced computer aided engineering simulation tools throughout SE Asia. Now relaunched in 2010 Compumod is back, doing what it does best supporting the world's leading Engineering Analysis tools across Australia and New Zealand. Compumod's mission is to deliver state of the art Computer Simulation tools and services to Australian and New Zealand businesses to help them achieve a competitive advantage and sustainable return on investment.

For more information, please visit  
[www.compumod.com.au](http://www.compumod.com.au)

## For further information please contact:

Steve Corrigan  
Technical Sales Specialist  
Compumod  
Tel: 1300 965 690  
Email: [steve@compumod.com.au](mailto:steve@compumod.com.au)  
Web: [www.compumod.com.au](http://www.compumod.com.au)

