

COMPUMOD
M A K I N G I T R E A L

Compumod Pty Ltd as
Trustee for Compumod Trust
ABN 17 551 729 150
Suite 201
793-795 Pacific Hwy
Gordon NSW 2072
Tel 1300 965 690
Fax 02 9844 5445
www.compumod.com.au

27 September 2012

Press Release: **Hankook Tire selects VI-CarRealTime to optimise the design of their tires**

Flagship real-time solution by VI-grade used by leading Korean manufacturer to benchmark against competition the dynamic performance of tires

Marburg, Sep 20th, 2012 – VI-grade GmbH, the leading provider of best-in-class products and services to bridge the gap between real world testing and technical simulation, today announced that Hankook Tire Co. Ltd, leading tire manufacturer, selected VI-CarRealTime, the specialized real-time vehicle simulation environment from VI-grade, to optimise the design of their tires. In particular, the Hankook Tire research and development division will use VI-CarRealTime to predict the dynamic behavior of high performance tires as part of full-vehicle models under various driving conditions.

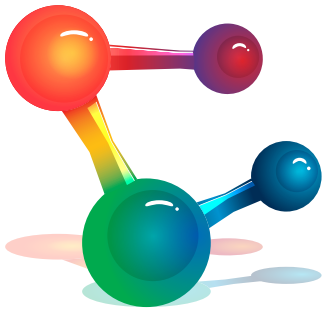
"VI-CarRealTime will enable us to develop a new tire characterized by an excellent ride and handling performance" says Dr. Jungsik Kim, Senior Manager of Vehicle Dynamics Research Team. "Since our tire models can be easily plugged into the VI-CarRealTime vehicle model, we can easily analyze and improve their performance. In the future, we will also use VI-CarRealTime for tire and vehicle development related to the motorsports industry."

"We are excited about the collaboration with Hankook Tires"

"We are excited about the collaboration with Hankook Tire" says Guido Bairati, Sales Director of VI-grade. "The addition of this important new customer to the comprehensive list of VI-CarRealTime customers reconfirms the strategic value of our solution in the automotive engineering process, with particular reference to the relationship between OEMs and suppliers."

About VI-CarRealTime

VI-CarRealTime provides a vehicle simulation environment where the same simplified vehicle model can be used by vehicle dynamics and controls engineers to optimise vehicle and control system performance. The product enables engineers to quickly and easily perform large Design of Experiments (DOE) and multi-objective optimization studies. VI-CarRealTime is the only real-time solution available in the market that can automatically and seamlessly export a real-time vehicle model directly from ADAMS/Car™. Similarly, VI-CarRealTime also enables to share component property files such as tires, springs, dampers, and bumpstops with ADAMS/Car™. VI-CarRealTime provides validated models which can be used by controls and hydraulic engineers to optimise the controller design based on accurate vehicle performance. VI-CarRealTime can be integrated with Matlab Simulink for controls systems. For further information please visit: http://www.vi-grade.com/index.php?pagid=vehicle_dynamics_carrealtime



COMPUMOD

M A K I N G I T R E A L

Compumod Pty Ltd as
Trustee for Compumod Trust
ABN 17 551 729 150
Suite 201
793-795 Pacific Hwy
Gordon NSW 2072
Tel 1300 965 690
Fax 02 9844 5445
www.compumod.com.au

About Hankook Tire Co. Ltd.

The history of Hankook Tire represents the history of the Korean tire industry. Ever since its opening in 1941 as Korea's very first tire manufacturer, HK Tire has paved the way for domestic tire companies for seventy years. In 2010 Hankook Tire was the largest automobile tire manufacturer with a sales volume ranking as first in the Korean market. In January 2011, the US magazine Modern Tire Dealer conducted a survey on tire manufacturer sales in 2010. Hankook Tire came in seventh place on the chart for five consecutive years from 2006 to 2010. Hankook Tire has increased its overall sales by an average of 13.9% per annum for the last ten years. Over 80% of Hankook Tire sales are derived from overseas markets. There are four local headquarters and twenty-seven local branches throughout the world. Each office serves as a connecting point in the Hankook Tire global network which export quality tires to over 180 countries. The company growth is based on cutting edge technology and an international manufacturing system. Powered by five R&D centers and five major tire manufacturing plants in three countries, Hankook Tire quickly delivers the tires that fulfill their clients' needs. With new plants under construction in China and Indonesia, the company is determined to keep their place as a "Leading Global Tire Company." For additional information, please visit <http://global.hankooktire.com/Main/default.aspx>

About AHTTI

Ahtti Co., Ltd. provides premier CAE solutions and consulting services to Korean customers and wishes to enhance the productivity of customers' virtual product development (VPD) process at the right time with a high level of quality. The company serves over 100 organizations in the areas of automotive, shipbuilding, aerospace, defense, electronics, machinery and heavy industry. Its current offering includes structural finite element analysis (FEA), noise, vibration and harshness (NVH), durability, multi-body dynamics, control, bio-mechanics, optimization and composite design. For more information, please visit: <http://www.ahtti.com>.

About VI-grade

VI-grade GmbH is the leading provider of best-in-class software products and services for advanced applications in the field of system level simulation. VI-grade, established in 2005, delivers innovative solutions to streamline the development process from concept to sign-off in the transportation industry, mainly automotive, aerospace, motorcycle, motorsports and railways. With office locations in Germany, Italy, Japan, and the USA, and a worldwide channel network of 20 trusted partners, VI-grade is a young and growing company with a highly skilled technical team. For further information, please visit: <http://www.vi-grade.com>

About Compumod

First established in 1982, Compumod quickly became the name to trust for the supply and support of advanced computer aided engineering simulation tools throughout SE Asia. Relaunched in 2010 Compumod is back, doing what it does best supporting the world's leading Engineering Analysis tools across Australia and New Zealand. Compumod's mission is to deliver state of the art Computer Aided Engineering tools and services to Australian and New Zealand businesses to help them achieve a competitive advantage and sustainable return on investment.

For further information please contact:
Warwick Marx
Compumod
Tel: 1300 965 690
Email: warwick@compumod.com.au
Web: www.compumod.com.au