

COMPUMOD
M A K I N G I T R E A L

Compumod Pty Ltd as
Trustee for Compumod Trust
ABN 17 551 729 150
Suite 201
793-795 Pacific Hwy
Gordon NSW 2072
Tel 1300 965 690
Fax 02 9844 5445
www.compumod.com.au

17 August 2012

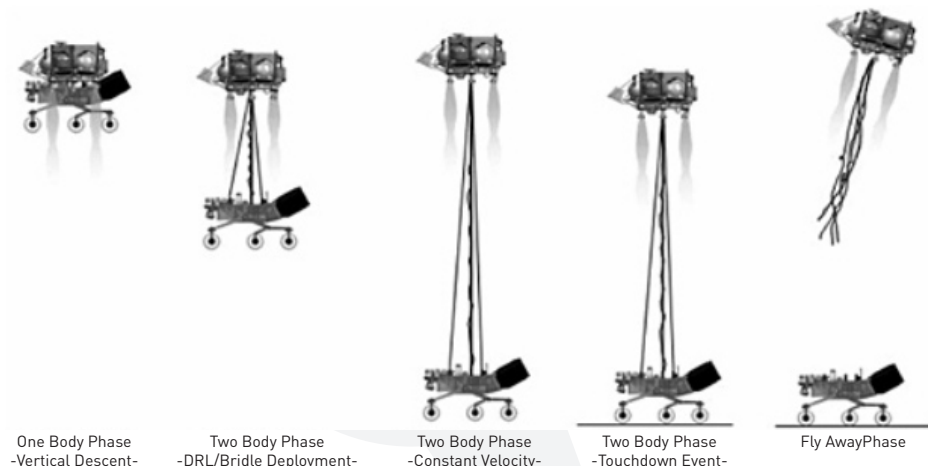
Press Release: **MSC Software's Adams plays Key Role in Curiosity's Descent & Landing on Mars**

SANTA ANA, CA - (Business Wire – August 17th, 2012)

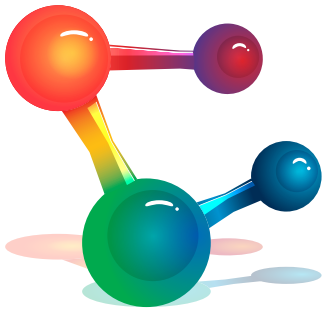
SANTA ANA, CA--(Business Wire – August 17th, 2012) – MSC Software Corporation today announced that its Adams multibody dynamics software played a crucial role in enabling the extraordinary descent and landing of the Curiosity Rover onto Mars on Sunday evening (August 5th). A team of engineers at the NASA Jet Propulsion Laboratory (JPL) performed a series of critical computer simulations of the sky crane maneuver sequences. In graceful fashion, the JPL team successfully and precisely placed the rover onto the Red Planet, in what many are calling an “immense technical achievement.”

The computer simulations that JPL performed in Adams were essential to the mission. For instance, during the rover separation, they had to prevent the flight hardware from clashing or coming into contact with each other during the “two body phase” of the Descent Rate Limiter (DRL)/bridle deployment. Using Adams, the engineers were able to model and simulate this event, which was critical for them.

“We congratulate the NASA team, and are delighted that our software supported such an extraordinary feat.”



The dynamic event studies performed by the JPL team were unlike most performed for products functioning here on Earth. The team knew they needed to rely on computer simulations to study the extreme loading conditions that Curiosity potentially would face during the final descent, separation, and landing stages. Many conditions could not physically be tested anywhere on our own planet. The engineers dealt with complexities involving Martian gravity, atmosphere, surface slope, and landing velocities that could not be duplicated exactly here on Earth, and relied on the simulations to gain the insight they needed to feel confident in the execution of the mission. The series of Adams simulations took place in parallel with design – but it was insight from the simulations that helped guide the design to maturity, and to prevent any failures resulting from potentially harsh loading conditions during the mission.



COMPUMOD

M A K I N G I T R E A L

Compumod Pty Ltd as
Trustee for Compumod Trust
ABN 17 551 729 150
Suite 201
793-795 Pacific Hwy
Gordon NSW 2072
Tel 1300 965 690
Fax 02 9844 5445
www.compumod.com.au

In addition to the separation event, Adams simulations were used to study a complete series of events beginning with power descent to touchdown. The craft carrying the rover was traveling at a speed of 13,000 mph and had to decelerate to a speed at which the sky crane maneuver could lower the rover safely down onto the Mars surface. The team of engineers at JPL created several Adams sub-models including a high-fidelity detailed model of the rover itself. This effort was many times more difficult than that for previous rovers, and included development of a mobility deployment model, a model for the rover separation, and a model for touchdown.

"The employees at MSC are extremely proud of what the JPL team has accomplished," said Dominic Gallelo, CEO & President at MSC Software. "We congratulate the NASA team, and are delighted that our software supported such an extraordinary feat. It is always inspiring to acknowledge the ways in which our customers gain value from simulations, and at times even rely exclusively on the technology to execute sophisticated missions like Curiosity. It is an event we will always remember."

For more details

To view a YouTube video about the entry, descent and landing, click the link below, <http://www.youtube.com/watch?v=ISmWYqXqqqs> and notice the MSC's Adams software in the background.

About Compumod

First established in 1982, Compumod quickly became the name to trust for the supply and support of advanced computer aided engineering simulation tools throughout SE Asia. Relaunched in 2010 Compumod is back, doing what it does best supporting the world's leading Engineering Analysis tools across Australia and New Zealand. Compumod's mission is to deliver state of the art Computer Aided Engineering tools and services to Australian and New Zealand businesses to help them achieve a competitive advantage and sustainable return on investment.

For further information please contact:
Warwick Marx
Compumod
Tel: 1300 965 690
Email: warwick@compumod.com.au
Web: www.compumod.com.au