

COMPUMOD
M A K I N G I T R E A L

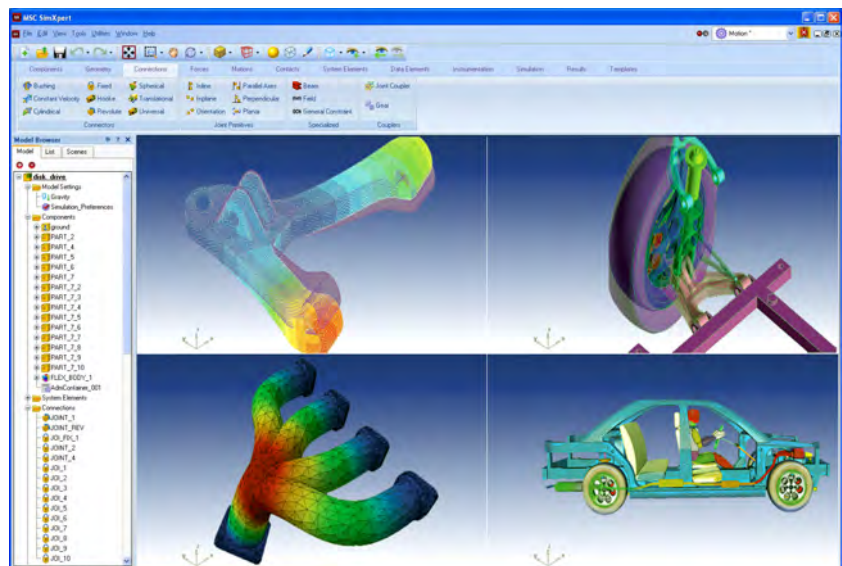
Compumod Pty Ltd as
Trustee for Compumod Trust
ABN 17 551 729 150
Suite 201
793-795 Pacific Hwy
Gordon NSW 2072
Tel 1300 965 690
Fax 02 9844 5445
www.compumod.com.au

22 November 2011

Press Release: SimXpert 2012 Delivers Significant Productivity Improvements for Engineers Performing Multidisciplinary Simulations

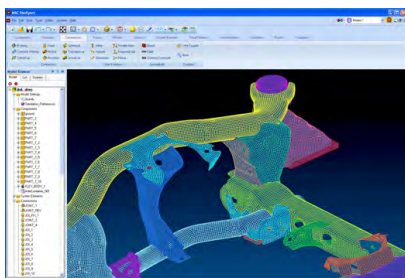
Engineers accelerate simulations with all-new new productivity tools for geometry and meshing, enhanced usability, and several capability extensions

21 November, 2011 - SANTA ANA, CA - MSC Software Corporation, the leader in multidiscipline simulation solutions that accelerate product innovation, today announced its new release of SimXpert 2012. This release empowers engineers to perform an expansive range of multidisciplinary simulations by delivering new tools that accelerate learning curves and shorten model preparation and setup times all within a fully integrated user environment. The release is scheduled to be available in December.



The SimXpert 2012 release provides engineers with a number of enhancements including:

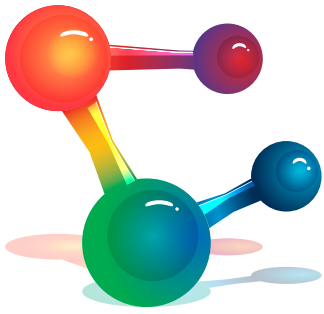
ENRICHED GEOMETRY AND MESHING ADVANCEMENTS



The time spent preparing geometry for meshing and analysis has been significantly improved in SimXpert 2012 with the addition of several new and enhanced geometry editing tools including geometry stitching, clean-up, and de-featureing.

Meshing has also been significantly improved through the introduction of new feature-based meshing capabilities which leverage

geometry features for uniform meshing patterns. Improvements in surface meshing allow engineers to generate better two dimensional meshes across complex geometry, and new interactive meshing enhancements help users simplify the preparation of mesh for analysis, and allow the mesh to automatically update when certain changes are made to it.



COMPUMOD

MAKING IT REAL

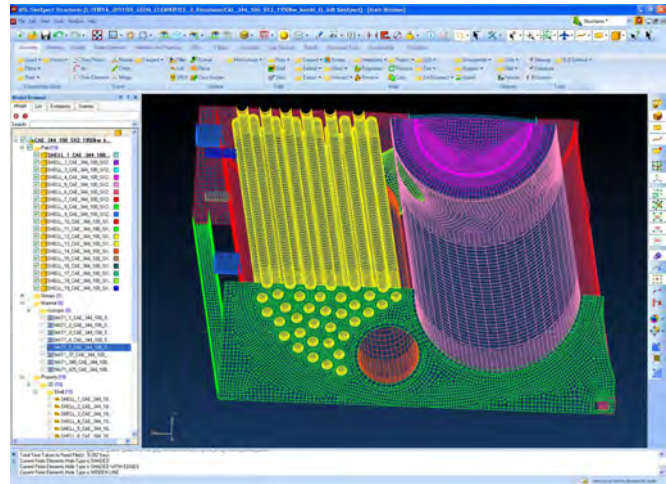
Compumod Pty Ltd as
Trustee for Compumod Trust
ABN 17 551 729 150
Suite 201
793-795 Pacific Hwy
Gordon NSW 2072
Tel 1300 965 690
Fax 02 9844 5445
www.compumod.com.au

SIGNIFICANT USABILITY AND PRODUCTIVITY

There have been a number of enhancements made to the Model Browser in SimXpert 2012 which give engineers greater ease of use and increased modeling efficiency.

Users will find impressive navigation and search improvements that speed assembly modeling and analysis. Additional improvements to the model browser, such as the ability to organize based on entity type display groups in user specified colors, help engineers perform quicker modifications and intuitive simulations with greater ease.

Extensive action libraries are also delivered with this release as open-source to help users assemble models quickly and learn how to perform customization and automation faster than ever before.

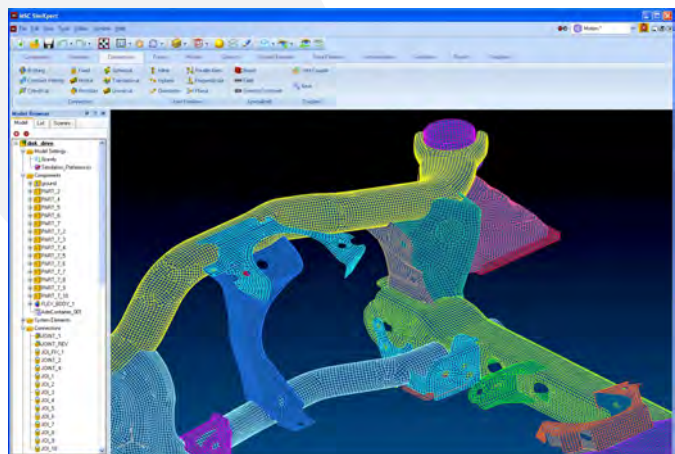


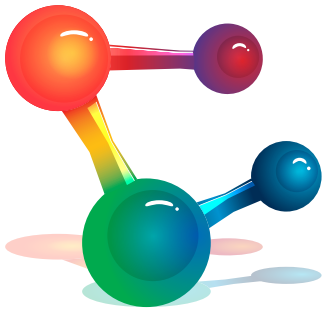
NEW CAPABILITY EXTENSIONS FOR MULTIDISCIPLINE ANALYSIS

SimXpert 2012 introduces new capabilities for structural simulations including MSC Random, which allows users to perform random analysis. The release also provides broader coverage of MSC Nastran and MD Nastran multidiscipline features. New extensions for explicit nonlinear simulations were added including revamping the user interface for improved ease of use, and automatic generation of coupling surfaces.

Aeroelasticity modeling support in SimXpert is now available with the 2012 release, supporting functionalities like model organization, wetted surface creation, spline blending, and verification.

Co-simulation improvements in SimXpert benefit users by enabling robust integration of motion and controls workspaces. For example, a motion model simulation is executed in a cooperative manner with another model, typically with a control system or actuation model system.





COMPUMOD

M A K I N G I T R E A L

Compumod Pty Ltd as
Trustee for Compumod Trust
ABN 17 551 729 150
Suite 201
793-795 Pacific Hwy
Gordon NSW 2072
Tel 1300 965 690
Fax 02 9844 5445
www.compumod.com.au

For more details

about the SimXpert 2012 release, visit simxpert.mscsoftware.com

To learn more

register for the upcoming "What's New in SimXpert 2012" Webcast at:
<http://www.mscsoftware.com/webinar/SimXpert2012>

About MSC Software

MSC Software is one of the ten original software companies and the worldwide leader in multidiscipline simulation. As a trusted partner, MSC Software helps companies improve quality, save time and reduce costs associated with design and test of manufactured products. Academic institutions, researchers, and students employ MSC technology to expand individual knowledge as well as expand the horizon of simulation. MSC Software employs 1,000 professionals in 20 countries. For additional information about MSC Software's products and services, please visit: www.mscsoftware.com.



The MSC Software corporate logo, Simulating Reality, Adams, Dytran, Easy5, Marc, MD Adams, MD Nastran, Patran, Mentat, MSC, MSC Masterkey, MSC Nastran, Mvision, SimDesigner, SimManager, and SimXpert are trademarks or registered trademarks of the MSC Software Corporation in the United States and/or other countries. NASTRAN is a registered trademark of NASA. All other trademarks belong to their respective owners.

About Compumod

First established in 1982, Compumod quickly became the name to trust for the supply and support of advanced computer aided engineering simulation tools throughout SE Asia. Relaunched in 2010 Compumod is back, doing what it does best supporting the world's leading Engineering Analysis tools across Australia and New Zealand. Compumod's mission is to deliver state of the art Computer Aided Engineering tools and services to Australian and New Zealand businesses to help them achieve a competitive advantage and sustainable return on investment.

For further information please contact:

[Warwick Marx](#)
Compumod
Tel: 1300 965 690
Email: warwick@compumod.com.au
Web: www.compumod.com.au